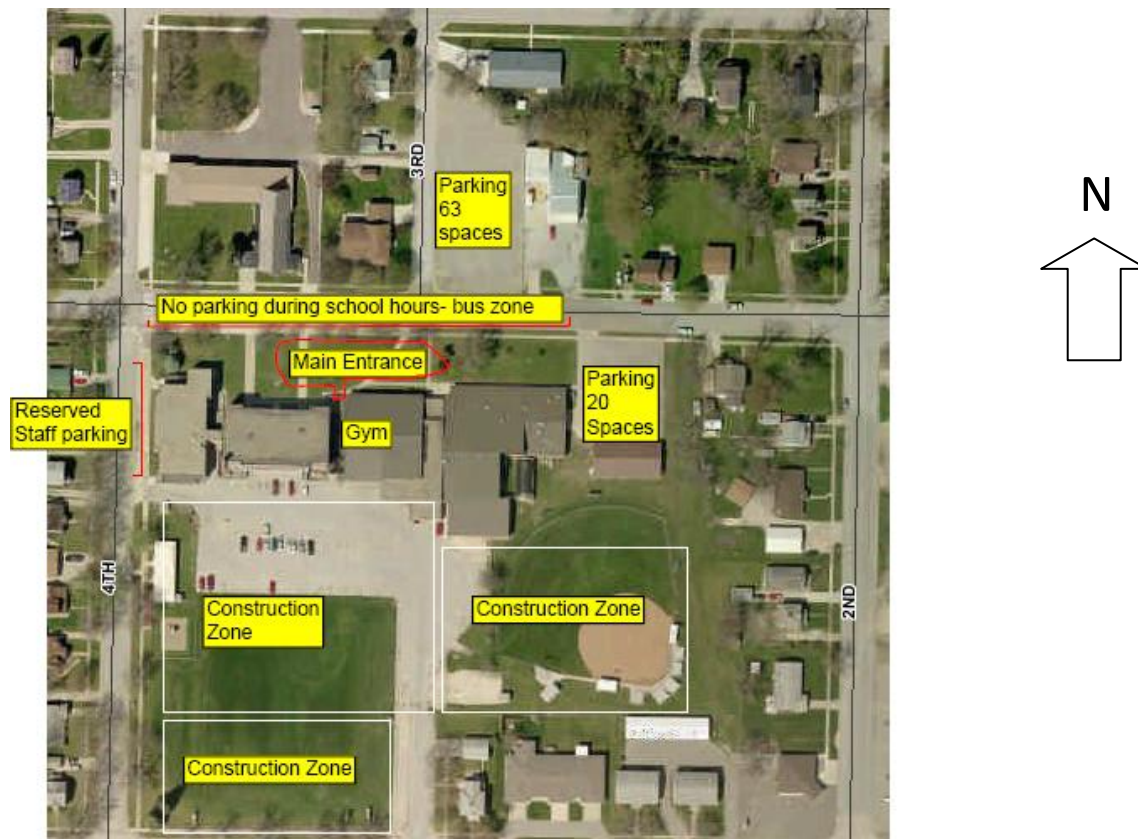


# PAC Parking Instructions

Effective from August 1, 2009 through completion of HS Project

A new school year filled with classes and extracurricular activities is just around the corner. Construction on the new high school will disrupt student and visitor parking during the next 17 to 23 months. The south parking lot will be closed during this period. Off street parking is available at the following locations:



After these two off street parking lots are filled students and visitors will have to use street parking around the high school for school activities. The main entrance into school gym activities will be through the north gym lobby doors closest to the off street parking.

If street parking is required, parking in east/west roads is encouraged because these are wider than north/south streets. Parking along the street directly north of the school is not permitted between 6:00 AM and 4:00 PM due to bus loading and unloading on this street. Parking along the west side of the building is reserved for staff and visitors.